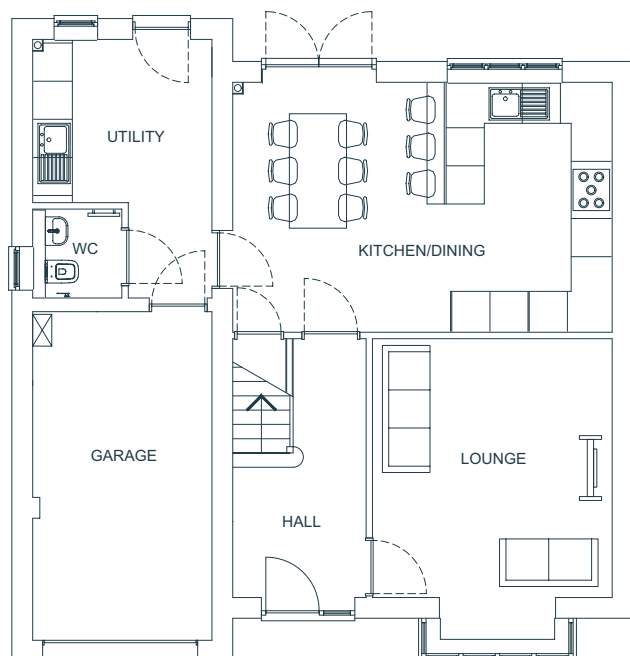


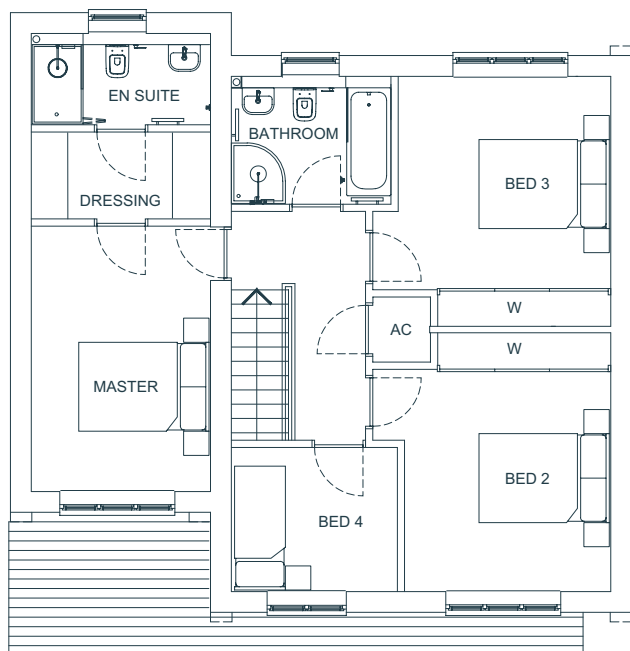
Ascot

Tudor Close



Ground Floor

Lounge	13' 4" x 12' 4"
Kitchen / Dining	19' 7" x 12' 11"
Utility	9' 3" x 8' 5"
WC	4' 7" x 4' 7"
Hall	13' 3" x 6' 11"
Garage	16' 11" x 9' 3"



First Floor

Master Bedroom	13' 8" x 9' 3"
Dressing Room	9' 3" x 4' 6"
Master En Suite	9' 3" x 4' 8"
Bedroom 2	11' 4" x 10' 8"
Bedroom 3	12' 2" x 10' 11"
Bedroom 4	8' 7" x 7' 5"
Bathroom	8' 3" x 6' 6"

Floor plans are intended to give a general indication of the proposed floor layout only. The dimensions are accurate to within + or - 50mm. Dimensions should not be used for carpet or flooring sizes, appliance spaces or items of furniture. Please ask our sales advisor for details of the treatments specified for individual plots. Drainage, heating and electrical layouts may vary. Dimensions are not intended to form part of any contract or warranty unless specifically incorporated in writing into the contract.

belfordhomes.co.uk

