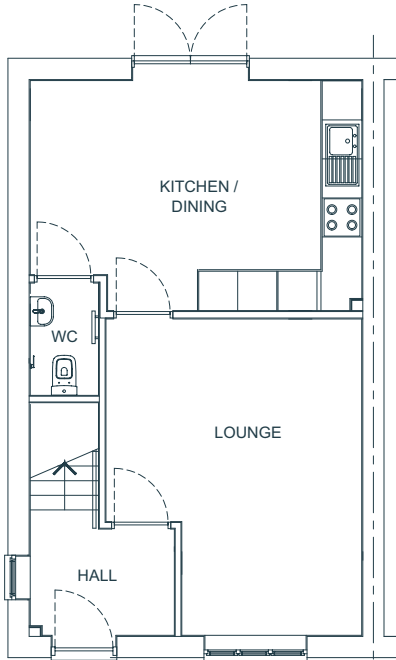


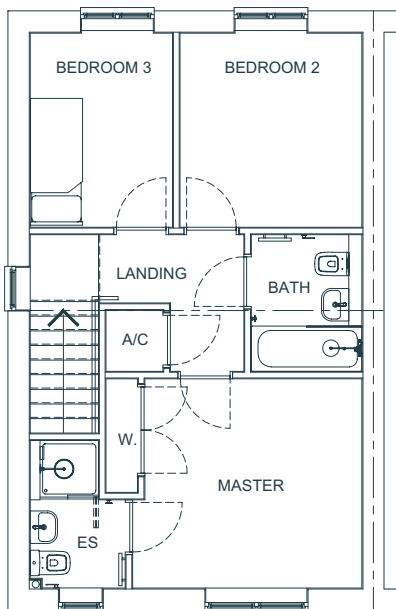
# Brandon

## Tudor Close



### Ground Floor

Lounge	15' 11" x 12' 11"	4864mm x 3933mm
Hall	7' 3" x 5' 4"	2217mm x 1634mm
Kitchen / Dining	16' 8" x 11' 7"	5100mm x 3536mm
WC	5' 8" x 3' 6"	1740mm x 1065mm



### First Floor

Master Bedroom	10' 11" x 10' 6"	3338mm x 3217mm
Master En Suite	7' 5" x 4' 9"	2267mm x 1461mm
AC	3' 1" x 2' 10"	937mm x 878mm
Bedroom 2	9' 9" x 9' 2"	2985mm x 2797mm
Bedroom 3	9' 9" x 7' 2"	2985mm x 2189mm
Bathroom	6' 11" x 5' 7"	2101mm x 1700mm

Floor plans are intended to give a general indication of the proposed floor layout only. The dimensions are accurate to within + or - 50mm. Dimensions should not be used for carpet or flooring sizes, appliance spaces or items of furniture. Please ask our sales advisor for details of the treatments specified for individual plots. Drainage, heating and electrical layouts may vary. Dimensions are not intended to form part of any contract or warranty unless specifically incorporated in writing into the contract.

[belfordhomes.co.uk](http://belfordhomes.co.uk)

