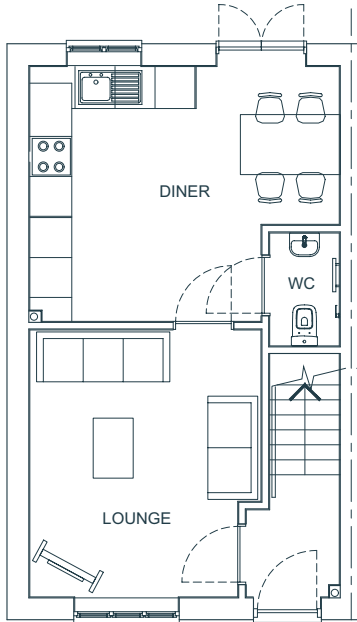


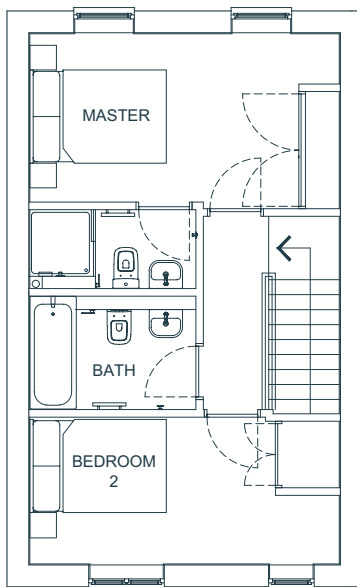
# Thornton

## Tudor Close



### Ground Floor

Lounge	13' 2" x 11' 4"	4010mm x 3473mm
Hall	4' 8" x 4' 5"	1426mm x 1337mm
Kitchen / Dining	15' 3" x 12' 6"	4648mm x 3828mm
WC	5' 7" x 3' 5"	1693mm x 1046mm



### First Floor

Master Bedroom	15' 3" x 8' 3"	4647mm x 2539mm
Master En Suite	8' 3" x 3' 11"	2510mm x 1185mm
Bedroom 2	15' 3" x 7' 3"	4648mm x 2206mm
Bathroom	8' 2" x 5' 7"	2490mm x 1705mm

Floor plans are intended to give a general indication of the proposed floor layout only. The dimensions are accurate to within + or - 50mm. Dimensions should not be used for carpet or flooring sizes, appliance spaces or items of furniture. Please ask our sales advisor for details of the treatments specified for individual plots. Drainage, heating and electrical layouts may vary. Dimensions are not intended to form part of any contract or warranty unless specifically incorporated in writing into the contract.

[belfordhomes.co.uk](http://belfordhomes.co.uk)

