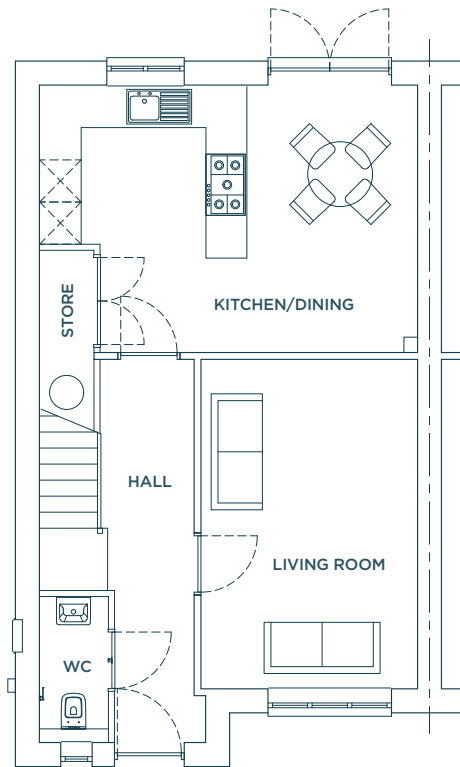


The Montford - Plot 1

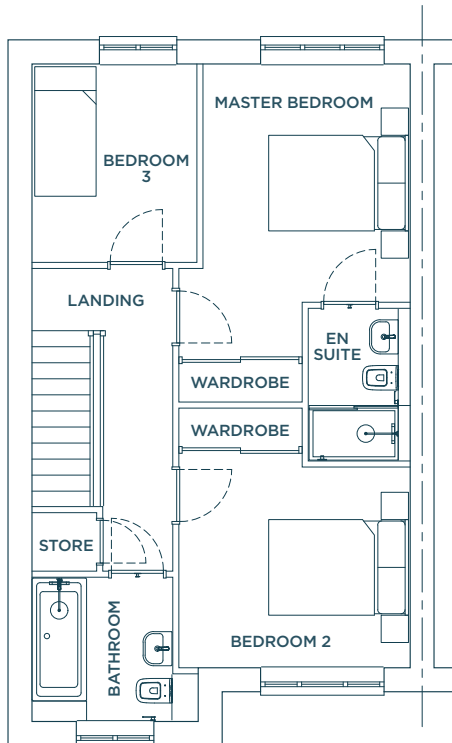
Silver Birch Close

Gross Internal Area 1,089 SQ FT



Ground floor

Kitchen/Dining	18' 1" x 12' 9"
Living Room	15' 9" x 10' 4"
WC	6' 10" x 3' 3"
Hall	18' 5" x 3' 9"



First floor

Master Bedroom	11' 4" x 9' 10"
Master En Suite	7' 3" x 4' 10"
Bedroom 2	11' x 9' 7"
Bedroom 3	9' 5" x 7' 10"
Bathroom	6' 10" x 6' 8"
Landing	14' 6" x 6' 8"

Floor plans are intended to give a general indication of the proposed floor layout only. The dimensions are accurate to within + or - 50mm. Dimensions should not be used for carpet or flooring sizes, appliance spaces or items of furniture. Please ask our sales advisor for details of the treatments specified for individual plots. Drainage, heating and electrical layouts may vary. Dimensions are not intended to form part of any contract or warranty unless specifically incorporated in writing into the contract.